

Note: Special attention must be given to the joint of the shell-body and the top cover of the motor. When you are certain that there is no gap then tighten the bolts (diagonally). If a gap exists, and is allowed, the braking efficiency could be affected.

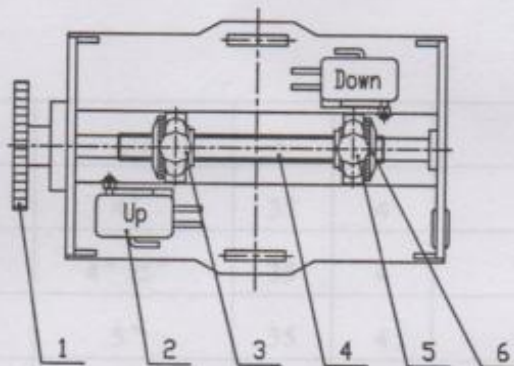
The phase order must not be violated for three-phase motors. When the rise-up becomes downside the motors must be immediately stopped for readjustment of the phase order. If an interim power source is used for testing, attention should be given to connect in correct sequence when normal power source is introduced.

The correct operation approach is that when the rise-up button on the White line is pressed, the motor should turn anti-clockwise, allowing the position limiting device to function-see Fig.1 for details. Otherwise the shutter door would be out of control and will be damaged.

Position Limiting Diagram

Fig.1

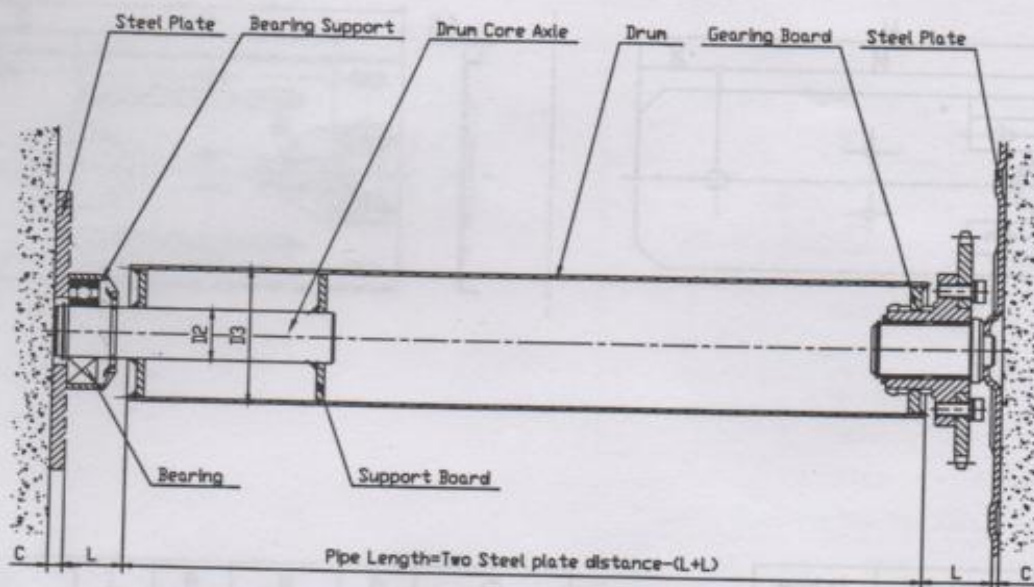
When the motor is to be fixed on the left



Serial Number	1	2	3	4	5	6
Name	Position limiting gear	Joggling switch	Locking bolt	Gearing wire	Position limiting screw nut	Position limiting slide piece

Drum install Diagram

Fig.2

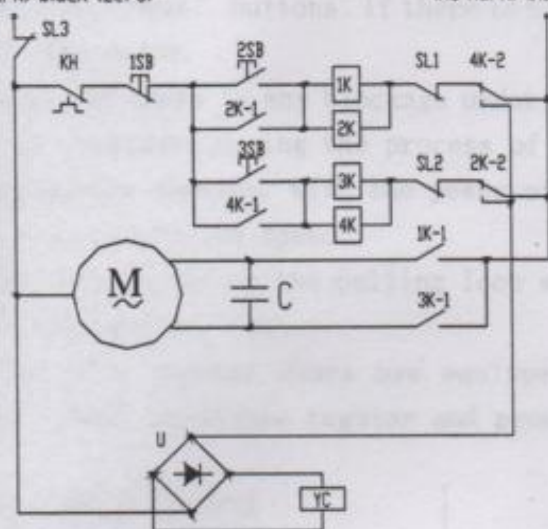


model	D2	D3	L	C	Axle	remark
300Kg	Φ 30	4"	35	4	206	
500Kg	Φ 35	4" /5"	35	4	207	
600Kg	Φ 35	5"	35	4	207	
800Kg	Φ 35	6"	45	5	207and1207	
1000Kg	Φ 40	6"	45	5	208and1208	
1300Kg	Φ 40	8"	45	12	208andUCF208	
1500Kg	Φ 40	8"	55	12	208andUCF208	

Note: Right side install, DI Shutter Door Motor Model

(with white mark) black (zero)

(No mark) black (fire)



220V Electric Wiring Diagram

Symbol	Name	Size & Model	Quantity
KH	Heat Protector	JOK—SF—1	1
1SB、2SB、3SB	Switch	2 open, 1 close	1
SL1、SL2、SL3	Top and bottom Buttons	JWL—1—11	2—4
1K—4K	Small relay	JQX—13F	4
C	Capacitor	16-30 μ f 450VAC	1
U	Rectifier		1
YC	Magnet coil		1
M	Single-phase Motor	~220V	1

V. Usage

Press "UP" or "down" buttons. If there is no reaction—press the "stop" button to avoid potential damage to the motor.

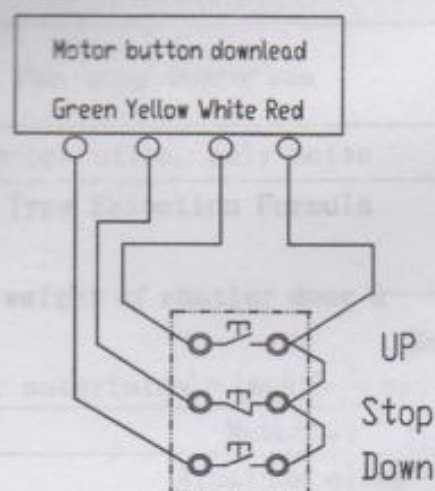
Check to see if there is any blockage under the shutter door before closing it. Passage under the shutter is forbidden during the process of starting or closing the door.

When closing the shutter, with the power off, lightly pull on the shutter door loop for slide—down at even controlled speed.

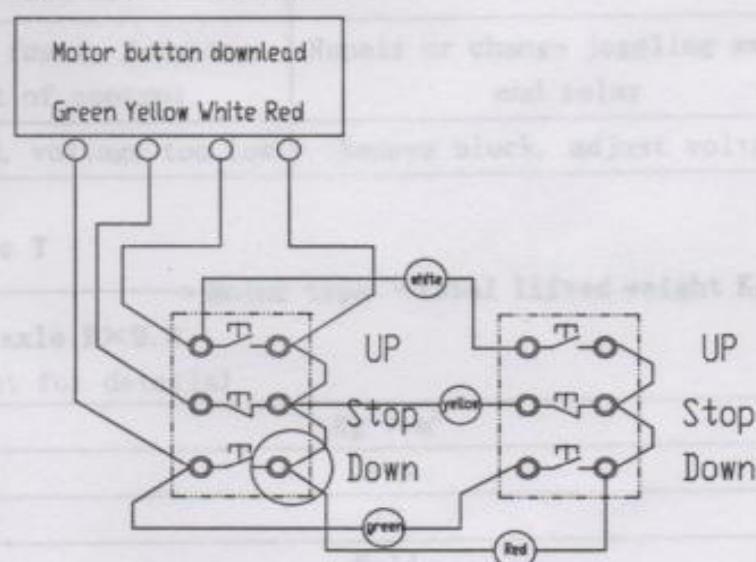
Relax the pull on the on the pulling loop when the door is almost closed and then pull again to close it completely.

Motors for fire shutter doors are equipped with separate control boxes—specially qualified personnel should undertake regular and preventative maintenance and inspection.

Single-Switch Control

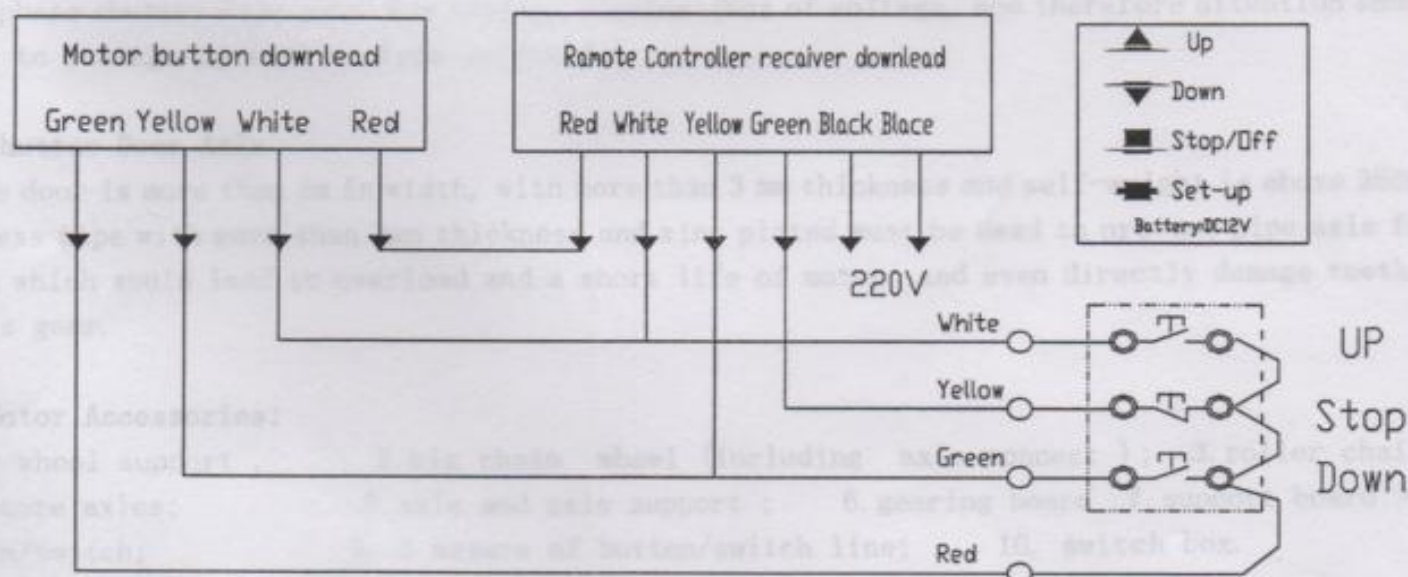


Double-Switch Dountead



☆The above is right-side installation—see Connection diagram; change the position of white and green lines in left-side installation

Remote Controller and Shutter door Motor (Switch) Connection



☆See Connection diagram for right-side installation; change the position of white and green lines for left-side installation

☆Uncover the pipe at the middle of the button line, -Cut off yellow line to uncover lead line,